



# FROST TOWER

## FORT WORTH, TEXAS

Architect: Bennett Benner Partners  
Contractor: Balfour Beatty  
Representative: Texas AirSystems

This mixed-use 25 story tower is a new addition to downtown Fort Worth. Its clean, contemporary design features 10 foot finished ceilings and floor-to-ceiling glass curtain walls for a 360 degree view of the city.

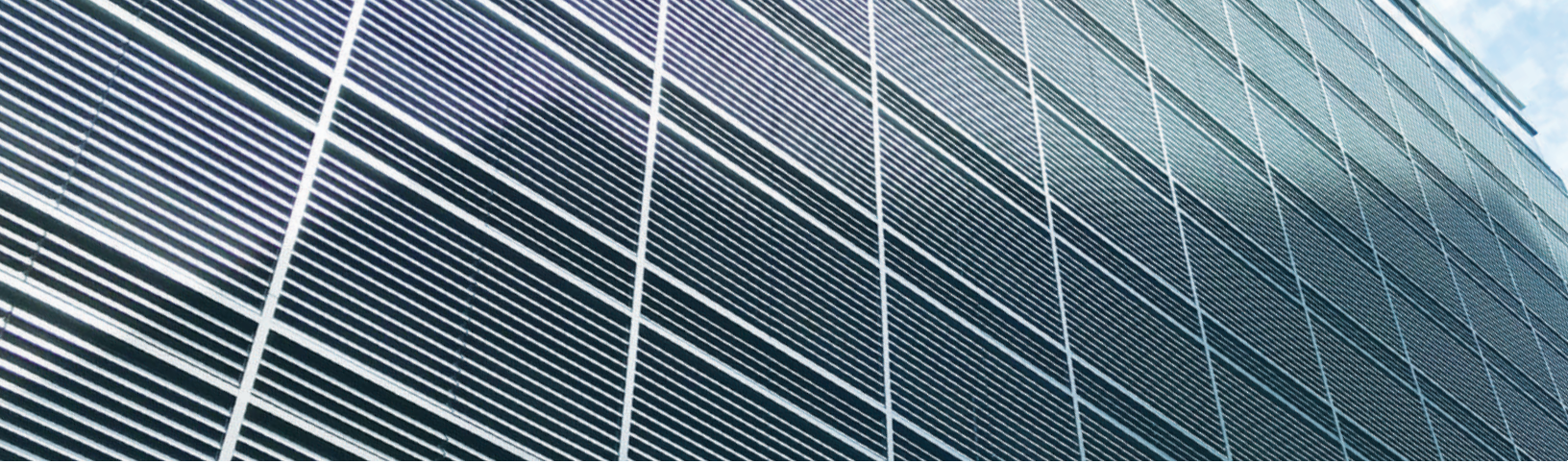
The tower is 278,000 square feet of office space and contains conference rooms, event space, a café, terraces, a sky lobby, roof garden and fitness center. The ground floor is 7,000 square feet of retail space.

Pottorff supplied louvers, fire dampers and fire/smoke dampers for this project.



# POTTORFF®

For more info, visit [www.pottorff.com](http://www.pottorff.com).



*Frost Tower features banks of Pottorff Louvers along the facade of several parts of the building.*

## POTTORFF LOUVERS USED IN THE FROST TOWER



Our EFD-637 6" louver features 37-1/2 degree drainable blades and is designed to prevent water penetration in non-wind-driven rain applications by collecting water in frame and blade gutters and channeling it into downspouts and away from airflow paths.

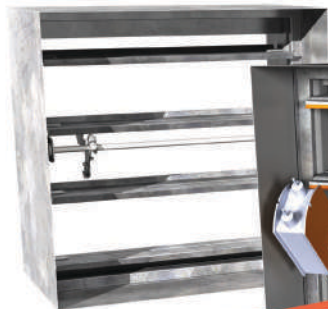
The EFD-637 is AMCA Certified for Water Penetration and Air Performance.



Our EFJ-430 4" extruded aluminum louver features 30 degree J-blades and is designed for intake and exhaust applications where protection against water infiltration is not critical.

This model is well suited for special shape applications and is available with hidden mullions for a continuous blade appearance in multiple section assemblies.

## POTTORFF LIFE SAFETY SUPPLIED FOR THE FROST TOWER



FSD-141



FSD-151-V

**LARGEST IN THE INDUSTRY  
at 96" x 48" Assembly Size**

FSD-151



VFD-10D

Pottorff's FSDs combine the fire barrier protection of a fire damper and smoke control of a smoke damper. Pottorff tests all of our fire/smoke dampers to UL 555 Fire Resistance Ratings and 555S Leakage Class Ratings. The FSD-140 and FSD-150 series dampers are equipped with either triple-V interlocking or airfoil blades.

Our curtain style blade fire dampers control fire in static and dynamic HVAC systems. Our VFD-10D has a maximum dynamic closure velocity up to 4,000 ft/min fpm and is the largest single section curtain fire damper on the market today.

# POTTORFF®

For more info, visit [www.pottorff.com](http://www.pottorff.com).